



Email: info@ycharter.com | Phone: 305.999.5839 | Fax: 866.880.6671

MORNING STAR



Length
119.9Ft



Make
**San
Lorenzo**



Year
2017



Staterooms
5



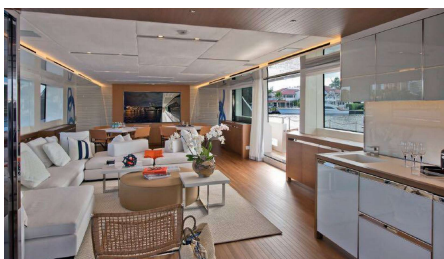
Guests
Sleeping
10

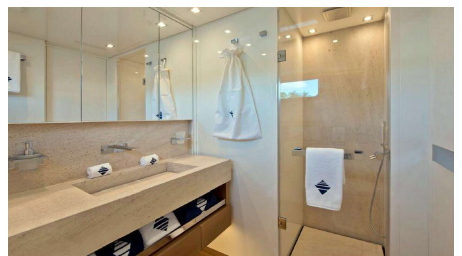
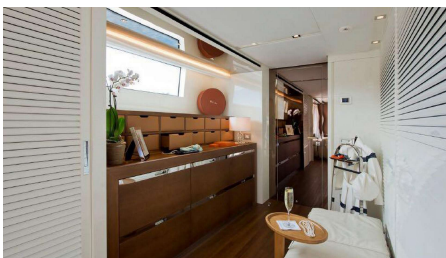
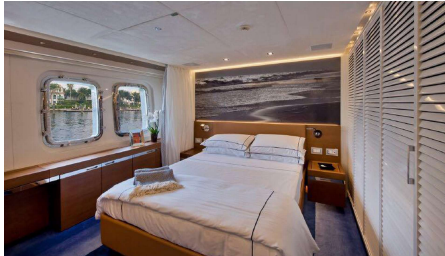


Crew
-



Weekly
Low
€115,000
High
€125,000

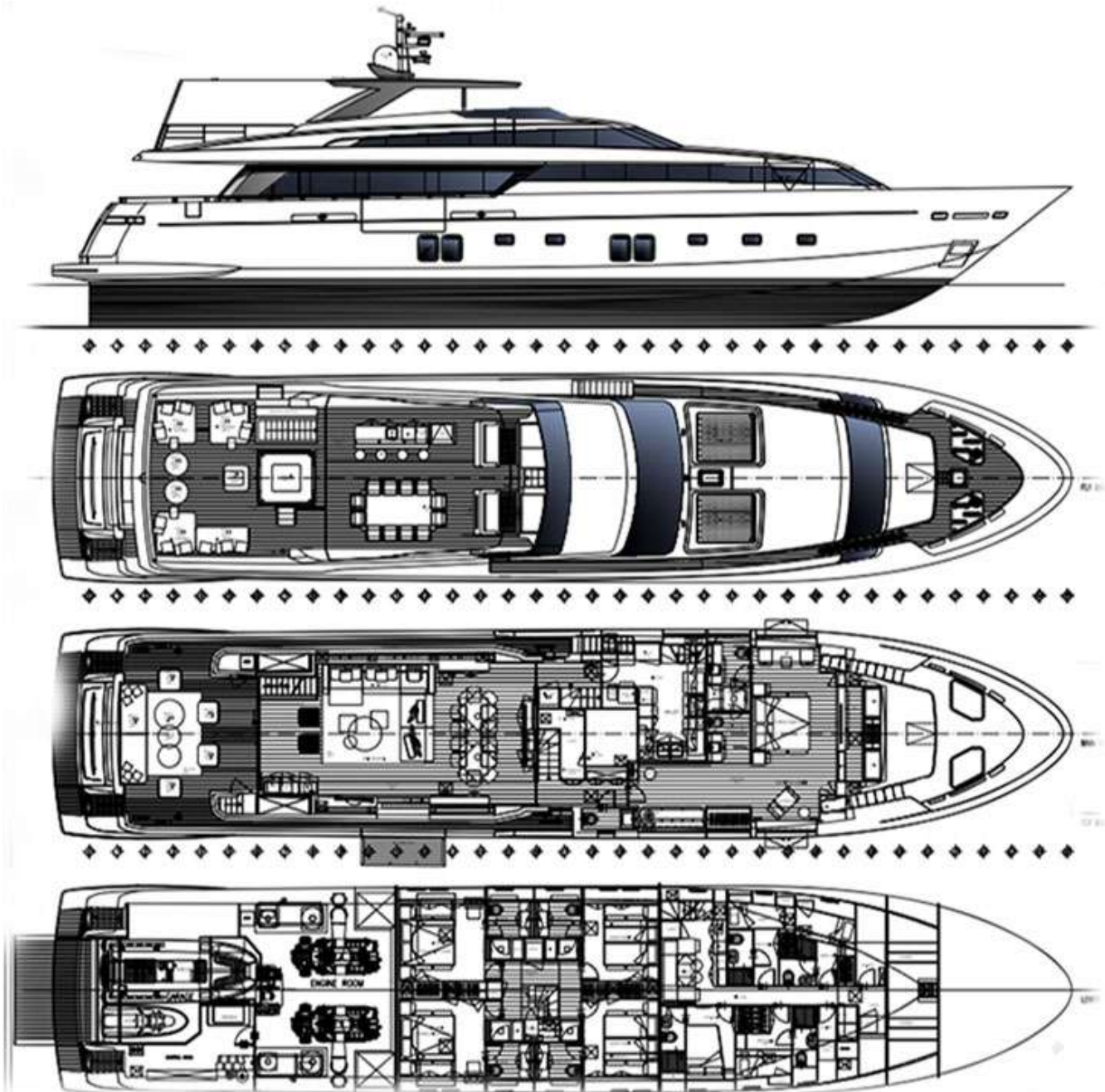




SPECIFICATIONS

Helipad: No
Jacuzzi: No
AC: Full
Beam: 24.11Ft
Draft: 6.11Ft

Range: 636.00nm
Fuel Consumption: 550
Cruising Speed: 22
Max Speed: 27



WATER TOYS

Wave Runners: Yes
Swim Platform: yes
Fishing Gear: Yes
Dinghy # pax 8
Knee boards: 1

Water Skis Adult: 2
Sailing Dinghy: 5.60

Water Skis Kids: 1
Snorkel Gear: 6

Communications:

Morning Star's interior configuration has been designed to comfortably accommodate up to 10 guests overnight in 5 cabins, comprising a master suite, 2 double cabins and 2 twin cabins. She is also capable of carrying up to 5 crew onboard to ensure a relaxed luxury yacht experience.

Other Entertainments:

Morning Star features a planing grp hull and grp superstructure, with teak decks.

CALENDAR

Locations

Summer Operating Ports

Greece, Turkey

Winter Operating Ports

Greece, Turkey

No Calendar Data available.
Please contact clearing house

Y Charter

Corporate Office

3363 Sunny Isles Blvd, Suite 507
N Miami Beach, FL 33160

South Beach Office

407 Lincoln Rd, Suite 507
Miami Beach FL 33139

Email: info@ycharter.com | Phone: 305.999.5839 | Fax: 866.880.6671 | Website: www.ycharter.com